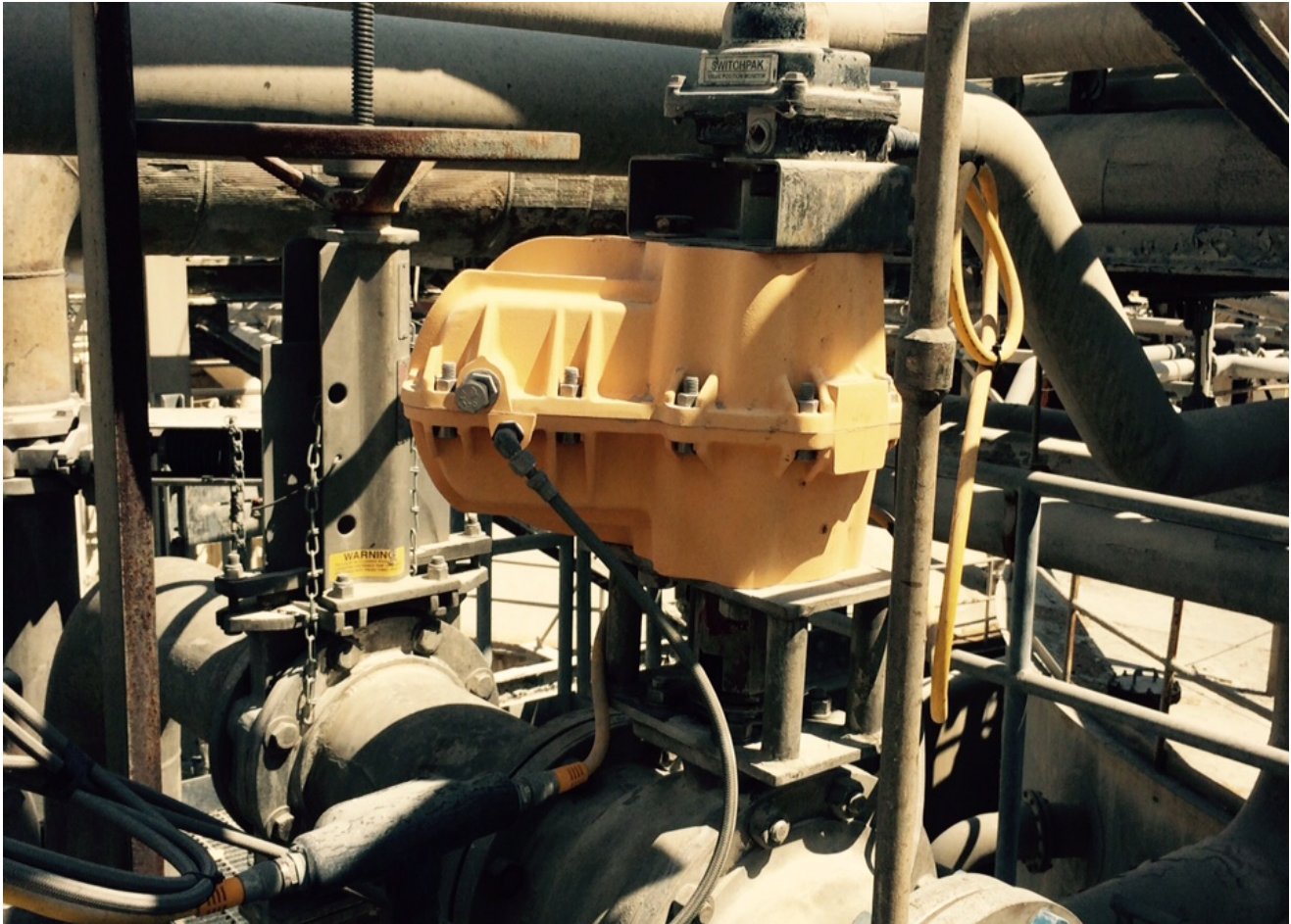


Paper Plant Green Liquor Application

Field Tested. Application Driven.



A Kinetrol USA Southeast Distributor installed a Kinetrol model 14 double-acting actuator on a 8" full-port ball valve on a green liquor line at a paper plant. The valve cycles 2 times per day to direct green liquor flow and weak wash alternatively from one pipe to another, in order to prevent solids build up in the pipelines.

Installed: 10 yrs.

Cycles: Twice per day
No Maintenance To Date

Kinetrol USA
1085 Ohio Drive
Plano Texas 75093
(972) 447-9443 phone
(972) 447-9720 fax
sales@kinetrolusa.com
