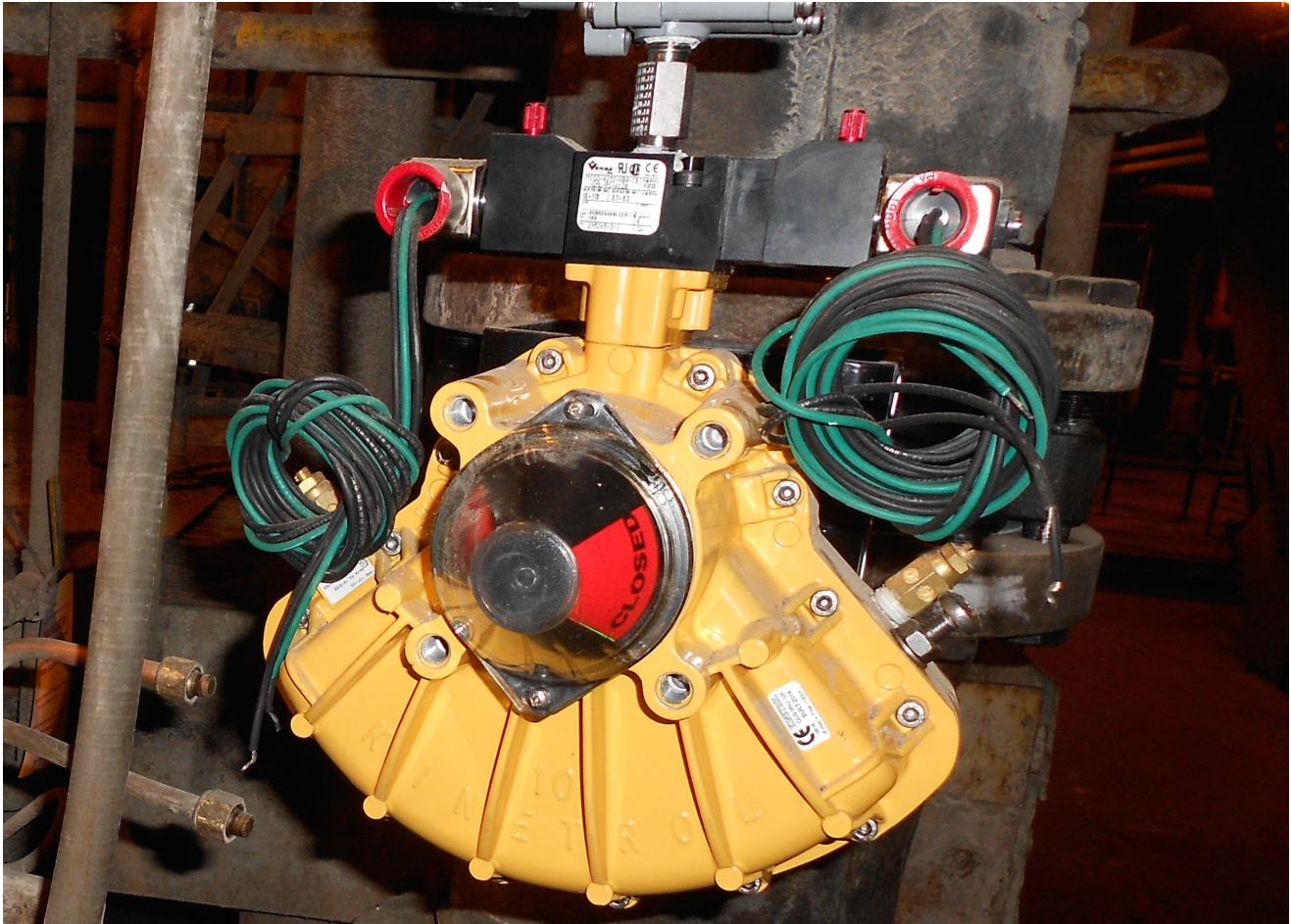


## Power Plant HPGSW Application

Field Tested. Application Driven.



A Kinetrol USA Midwest Distributor installed a Kinetrol actuator in a power plant high pressure general service water (HPGSW) system. The double-acting actuator is used for on-off service, and is mounted on an 8" high performance butterfly valve with a high cycle rate (20-30 cycles per day).

**Installed:** 1 Year  
**Cycles:** 20-30 per day  
No Maintenance To Date

---

**Kinetrol USA**  
1085 Ohio Drive  
Plano Texas 75093  
(972) 447-9443 phone  
(972) 447-9720 fax  
[sales@kinetrolusa.com](mailto:sales@kinetrolusa.com)

---